

EASTSIDE HERITAGE CENTER



Connections for yesterday, today, and tomorrow.

HERITAGE REFLECTOR

December 2009

Volume IX

Issue IV

Vision

To be a destination heritage museum and research facility that enhances community identity through the preservation and stewardship of the Eastside's history.

Mission

To steward Eastside history by actively collecting, preserving, and interpreting documents and artifacts, and by promoting public involvement in and appreciation of this heritage through educational programming and community outreach.

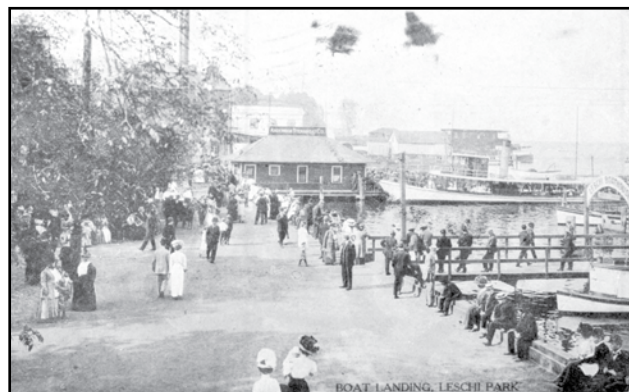
In this Issue

Education Corner.....	2
Thank You.....	2
Lake Excursions cont.....	2
Recent Accessions.....	3
Wish List.....	3
Oral History Project.....	3
Director's Message	4
Programs	5
Holiday Shopping	6
New Trustee	6
Planned Giving	6
Volunteer Corner.....	7
EHC Membership	7

Lake Excursions: 25 Cents

Steve Williams
Volunteer

One hundred years ago Seattle held its first world's fair, the Alaska-Yukon-Pacific-Exposition (A-Y-P). A fleet of 14 steamboats carried 1.5 million passengers to and from the fair at the University of Washington campus, to destination parks on the Eastside, or on scenic tours around Lake Washington. The smaller boats ferried Seattle passengers from Leschi and Madrona and Madison Parks for 10 cents; while the larger boats offered 18 and 25 mile "excursions" for just a quarter.



Above: Anderson Steamboat Company at the Leschi Ferry Landing in Seattle, September 1911. Joy Iverson Collection.

The Official 1909 AYP Guidebook had this directive: "Visitors to the exposition should not fail to go to the grounds by the 'Water Route,' on beautiful Lake Washington,

(...) From the decks of the white, yachtlike steamers you behold, as you swiftly plough through the clear blue water, the beauty of the shore, lined with homes, from a summer cottage to a permanent mansion amidst everlasting green, (...) and best of all, old Mount Rainier, the highest and most magnificent mountain peak in the United States, standing, as it seems, with its base in the Lake and rising

more than 14,000 feet to the sun-kissed snow of its crown. The Water Route is



Left: The ferry Atlanta under construction. Image courtesy Kirkland Heritage Society.

continued on page 2...

A-Y-P...continued from page 1

one of the greatest attractions of the exposition.”

John L. Anderson, a Swedish immigrant who went to sea at age 14, was the person who created this A-Y-P fleet. He arrived in Seattle with less than \$10 to his name in 1888, but worked his way up from cabin boy to steamboat ‘Master’ by age 22. Prior to the fair, Anderson either built or improved 16 different boats (one each winter), while still captaining regular ferry runs out of Leschi and offering excursion tours of the lake.

In 1907 he acquired the Houghton shipyard and built three new boats for the fair. The ‘Atlanta’ served Eastside runs to Juanita, Kirkland and especially “Atlanta Park”- located just above the shipyard. The park was known for its large shade trees, clear spring water, and fried chicken dinners from the nearby Lake House Hotel. The park occupied six acres of land with expansive views of Seattle and the Olympic Mountains. (It is known today as Carillon Point).

On Mercer Island, Captain Anderson spent several thousand dollars to create Fortuna Park with a large dance pavilion, baseball field, swimming beaches, and picnic groves. The park had its own elegant steamer, the ‘Fortuna.’ (Today the site is home to the Covenant Shores Retirement Community). In Bellevue, Wildwood Park became that area’s primary ferry landing as the city grew up around it. (Meydenbauer Beach Park has since been developed to the west, and a waterfront promenade linking it to Downtown Park is planned).

As John Anderson’s legacy today, four different companies offer cruises on the lake, and there are 46 public parks, large and small, all up and down the lakeshore. The graceful boats and happy parks were a major Eastside contribution to the A-Y-P; and 1909 has been known ever since as the “Golden Age of Steamboating on Lake Washington.”

Thank You

Eastside Heritage Center would like to thank **Humanities Washington** for its \$500 Quick Grant to plan and design the 2009 Santa Exhibits at Crossroads Shopping Center.

Thank you also to **4Culture** for its 2009 Sustained Support funding of \$9,000. These funds are vital to EHC’s ongoing operations, public programs, services and collections stewardship.

Membership Reminder

To ensure that you continue to receive a copy of the *Heritage Reflector*, EHC’s quarterly newsletter, please remember to keep your Eastside Heritage Center membership up-to-date.

You can use the Membership Form on page 7 of this newsletter, or join online at www.eastsideheritagecenter.org

Thank you for your continued support!

Education Happenings

Jane Morton
Education Coordinator

The Education Coordinator at Eastside Heritage Center must often ‘wear many hats.’ Besides renting out and doing the upkeep of our Treasure Boxes and Heritage Props Kits, I also do a variety of displays and presentations.

Eastside” digital slide show, along with LIDAR maps of Bellevue provided by the City of Bellevue. The audience was 3rd through 6th graders and their parents.



Above: Education Coordinator, Jane Morton, demonstrating butter churning at an open house event at Juanita Elementary.

During November, I gave presentations at both the Bellettini and Gardens at Towne Square facilities. The residents were very interested in the history of Bellevue (“Bellevue: How It Grew”) and transportation development on the Eastside of Lake Washington (“Getting Around the Eastside”).

I also did a special program for the Kelsey Creek Home School Program (housed at Bellewood Elementary) on changes in landforms in Bellevue. I used the “Getting Around the

Currently, I’m working on a spring program for Eastside Preparatory School using our “Strawberry Fields Forever” presentation and primary source documents showing the growth of Bellevue from the 1930s to the present.

Recent Accessions

Thank you for your donations to the collection:

Joy Iverson

- Documents and ephemera from Highland Junior High and Interlake High School.

Redmond Historical Society

- A minute book from the Nokomis Club.

Lowry Bennett

- A banner of Past Presidents and the Charter of the Bellevue Lions Club.

Ted Cox

- Documents from Bellevue High School, including annuals.

Donna Hart

- Catalogues from the Bellevue Arts Museum.

To Donate Items:

call 425-450-1049 or email archives@eastsideheritagecenter.org

EHC Wish list

EHC is seeking the following donations:

FOR THE OFFICE:

- Letter-size filing cabinets

FOR THE COLLECTION:

- Eastside women's history items, especially relating to women in business & politics.

- Photos, documents and ephemera from:

› **South Bellevue & North Renton** areas, e.g., Cougar Mountain, Lakemont, Lewis Creek Park, Coal Creek, Newport, May Creek, Port Quendall, etc.

› **Named neighborhoods**, e.g. Somerset, Newport Hills, Whispering Heights, Stewart Heights.

- Photos of Dick's Drive-In Restaurant in Bellevue.

- Eastside newspapers or fragments of newspapers prior to 1918.

“Words of Wisdom - Voices of the Past” An Oral History Project

Eastside Heritage Center Oral History Committee

Between 1996 and 2003, Eastside Heritage Center (Bellevue Historical Society) was engaged in an oral history project entitled “Words of Wisdom – Voices of the Past.” The primary purpose of this project was to collect and preserve the memories and recollections of Bellevue's long-time residents before those memories were gone forever.

As a supplement to the project, Eastside Heritage Center recently produced an Oral History Resource Catalogue. The Catalogue is a reference guide for researchers and staff. It provides a brief introduction to each of the interviews collected during “Words of Wisdom.” The entries contain basic information about the interview date, length, recording format and participants, as well as a brief biography of the narrator, and a list of the topics discussed.



Above: Mitsuko “Mitzie” Hashiguchi with son Lester on the steps of the Japanese Clubhouse, Bellevue, 1941.

The oral history collection at the Eastside Heritage Center is constantly expanding, and the Catalogue will grow as more interviews are collected and as older interviews are transcribed.

Special thanks to our narrators, interviewers, transcribers and all those who contributed their memories of Bellevue. We are indebted to 4Culture for funding this project.

Now that we have our 2009 edition completed, we are currently working on a catalogue for Marymoor's Eastside Women's Oral History Project from 1989. The goal is to have that project completely catalogued in 2010, in conjunction with the Washington State Centennial for Women's Suffrage.

Recent Accession:

Right: Banner of Bellevue Lions Club Past Presidents. The Club was chartered in 1944 and disbanded in 2002.

Donated by Lowry Bennett, 2009.036.002



Eastside Heritage Center

Board of Trustees

Ross McIvor <i>President</i>	Michael Luis <i>Treasurer</i>	Betina Finley Sherry Grindeland Ray Higgins Karen Klett L. Lee Maxwell Kim Radcliffe John Stokes
Iris Tocher <i>Vice President</i>	Lynn Sherk <i>Secretary</i>	
Tim Johnson <i>Vice President</i>	Margot Blacker Justin Bunch Rick Carlson Reagan Dunn	
Stu Vander Hoek <i>Past President</i>		

Staff

Heather Trescases <i>Executive Director</i>	Megan Carlisle <i>Archivist</i>	Jane Morton <i>Education Coordinator</i>
--	------------------------------------	---

Endorsers

Bob Burke	Pamela Lee	Daphne Schneider
Nan Campbell	Ken Johnson	David Schooler
Dick Chapin	Leslie Lloyd	Karl Thunemann
Doris Cooper	Doreen Marchione	John Valaas
Mike Creighton	Dan McDonald	Janice & DP Van Blaricom
Jean Floten	Louise Miller	Bob Wallace
Kemper Freeman, Jr.	Rose Nohara	Scott Wallace
Stacey Graven	Bob Nuber	Rosalie Whyel
Jerry Henry	Ron Sher	
Ross Hunter	Lee Springgate	
Carol James	Bill Ptacek	
Fred Jarrett	Colin Radford	

Charter/Founding Members

Brad Best	Louise Miller
John Betrozoff	Alex Modelski
C.Keith Birkenfeld	Charles Morgan
Richard & Margot Blacker	Bob Neir
Charles Bovee	Phil & Shelley Noble
Dianna Broadie	C. & W. O' Donell
John Cannon	Arnold Olson
Karyl Dean	Sally Polk
Steve & Kathy Dennis	Connie Reed
Phyllis Fenwick	Betty Ann Rizk
Diana Ford	Bob & Pat Sandbo
Peter Gulick	Victor Scheffer
Birgit Hansen	Daphne Schneider
Peggy Hansen	Dick & Susan Schwasnick
Bob Hennig	Barbara Sharpe
Thomas K. Hitzroth	W. & V. Thompson
Bill Lagen	Karl Thunemann
Charles Le Warne	Iris Tocher
Anne Long	D.P. & J. Van Blaricom
Jim & Pat Loughran	Stuart Vander Hoek
Karen & Duke Luetjen	Libby Walgamott
Louis & Patty Marsh	John Walker
Beatrice Matewson	Doug & Patti Ward
Philip Maxeiner	James & Gwen Warren
Lee Maxwell	Robert & Barbara Welsh
John McClelland	Rosalie Whyel
Rosa McDonald	Marcy Williams

From the Executive Director



Heather Trescases
Executive Director

What a year we have had! The diversity and breadth of our programs in 2009 touched a wide variety of Eastside residents who were involved in learning about local history. Some highlights include:

- EHC staff & volunteers provided tours of the historic Winters House and grounds during Natural Resources Week for over 500 Bellevue School District students and parents.
- The Strawberry Festival drew over 40,000 people to Bellevue's Crossroads International Park.
- EHC touched young children and families with programming at the Fraser Cabin in Kelsey Creek Park, with 17,850 visitors.
- EHC's Educational Treasure Boxes served approximately 1,340 children in 2009, and an additional 1,300 were touched through school open house cultural events.
- Adult education outreach programs to retirement communities, businesses, service clubs, etc., along with EHC's Heritage Series presentations, touched over 450 people.

- EHC's Research Department fielded approximately 120 specific Research Requests, many of which led to broad public exposure of EHC's collection.

- EHC's website received 419,454 hits in 2009.

- Satellite Heritage Exhibits in public spaces touched an unquantifiable number of people of all ages.

- EHC's Heritage Corner articles in the Bellevue Reporter reach 46,000 households and businesses weekly.

Two new education-based public programs were also introduced in 2009: Pioneer Pastimes at Lewis Creek Park, where families discovered the history of coal mining in the area, while making mining tags, churning butter and grinding coffee; and a partnership with KidsQuest Children's Museum for a Free Friday Night program filled the "A-B-Cs" of hands-on heritage activities.

EHC was proud to partner with the Crossroads Farmers Market as one of its non-profit sponsors this year, where we maintained a regular presence with historic photo displays and "what's it?" items for the public to enjoy.

Thank you to all of our dedicated volunteers, Board of Trustees and staff, for being such responsible stewards of our collective history, and helping to ensure that EHC continues to provide high-quality services to the community.

Upcoming Programs

HERITAGE SERIES

Lake Excursions: 25 cents

Date & Time: Thursday, February 18, 2010, 7:00 PM

Location: Mercer Slough Enviro. Education Center
(1625 118th Ave SE, Bellevue)

Join EHC volunteer and researcher Steve Williams, as he shares the story of Lake Washington ferries and parks created as a result of the A-Y-P in 1909. Please bring any artifacts, documents and stories you would like to share!

Presented in partnership with Bellevue Parks & Community Services.

Colman Cold Case

Date & Time: Thursday, May 20, 2010, 7:00 PM

Location: Mercer Slough Enviro. Education Center
(1625 118th Ave SE, Bellevue)

Learn about life on Lake Washington in the late 19th century, as seen through the eyes of Clarissa Colman, and hear the intrigue & mystery surrounding the murder of her husband, James Manning Colman. EHC Trustee Sherry Grindeland will set the scene, and "History Detective" Tom Hitzroth will share his latest theories surrounding the Colman murder.

Presented in partnership with Bellevue Parks & Community Services.

EHC On Display

Visit one of EHC's community exhibits this holiday season!

SANTAS OF CHRISTMAS PAST, HOW DOES SANTA TRAVEL

Winters House (2102 Bellevue Way SE, Bellevue)

At the Winters house you can find a collection of Santas from Christmas Past. These Victorian style Santas recall Christmas in Bellevue's early days. Children can also see how Santa makes his way around the world in one night. From sleigh to skis, from the back of a moose to the back of a manatee!

FOR MORE INFORMATION
on any Eastside Heritage Center programs,
visit www.eastsideheritagecenter.org

Program Ideas?

Contact EHC at 425-450-1049 or
email director@eastsideheritagecenter.org

DOLLS FOR DEMOCRACY EXHIBIT

Date: January 7 through March 31, 2010

Location: Winters House (2102 Bellevue Way SE., Bellevue)

Eastside Heritage Center will be hosting the Washington State Jewish Historical Society's Dolls for Democracy and Diversity exhibit starting in January 2010.

The Dolls for Democracy and Diversity are hand-made dolls created by Cecil Weeks between the 1940s and 1970s. They depict such historical figures as George Washington, Jackie Robinson, Abraham Lincoln, Anne Frank, Justice Louis Brandeis and Helen Keller. During the 1950s, the B'nai B'rith Women began touring public schools nationwide with the dolls in an attempt to teach children acceptance and awareness of different ethnic, racial, religious and financial backgrounds.



Above: Dolls of Jane Addams (left) and Benjamin Franklin (right).
Images courtesy Washington State Jewish Historical Society.

THE SANTA COLLECTION, SANTAS FROM AROUND THE WORLD

Crossroads Bellevue (NE 8th & 156th Ave. NE in Bellevue)

Our largest display can be found at Crossroads Shopping Center. Crossroads has generously provided the Santa collection a home for the holidays. At this location you can find over 100 hundred Santas of different types on display. There are Santas from the 40's, 50's, 60's and 70's, and Santas from all around the world. This exhibit was developed through the support of Humanities Washington

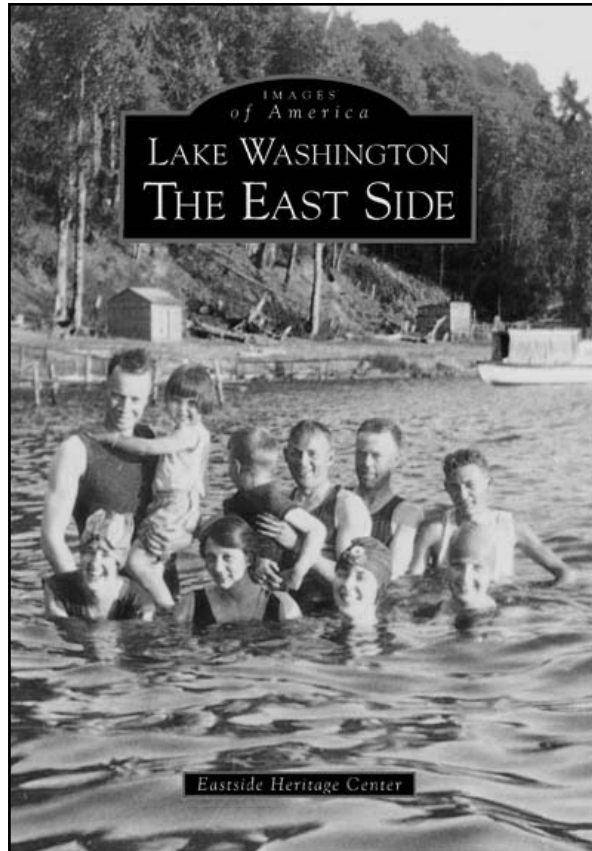
Easy Holiday Shopping at the EHC Bookstore

It's easy holiday shopping at the Eastside Heritage Center Bookstore. Consider an EHC membership for a friend or make a donation to EHC in a friend's name, or in honor of someone special to both of you. It's not only thoughtful, but tax deductible!

If it's the surprise in the box that counts, choose one of our fascinating local heritage books and package it in an Eastside Heritage Center logo tote bag or order a print of one of our historic photos for that person who remembers the Eastside as it used to be.

Your gifts from EHC will bring double pleasure when that person realizes that you have also supported your local heritage organization.

Visit the EHC Bookstore online at www.eastsideheritagecenter.org



Welcome

Eastside Heritage Center
welcomes its newest
member to the
Board of Trustees:

JOHN STOKES



John is a long-time PTA volunteer, serving at the local, council, regional, state and national level. He is a Trustee with the Bellevue Schools Foundation and a member of the Bellevue Parks & Community Services Board. John has served on several committees within the school district, including the budget committee and instructional materials committee.

Recently, John was recognized as the WSPTA Outstanding Advocate for 2009.

John is a retired attorney with both private practice and public agency experience, including work on education matters and employment law. He is a graduate of the George Washington University Law School in Washington, D.C.

John and his wife, Bettina, live in Bellevue's Woodridge neighborhood.

Planned Giving

Be a part of Eastside history...

Leave a legacy and make a planned gift to the Eastside Heritage Center.

You can ensure that the history of the Eastside is preserved for future generations by including a bequest to the Eastside Heritage Center in your will. The wording of your bequest can be as simple as:

"I bequeath to the Eastside Heritage Center a gift of \$ _____ or _____ % of my estate."

Please remember to include our federal tax identification number, which is 91-1124636. A bequest can also take the form of stocks, bonds, mutual funds, annuities, or real estate.

A planned gift requires careful consideration and is best made with the guidance of your own financial or legal advisors.

If you have included the Eastside Heritage Center in your will, or would like information on making a planned gift, please contact the EHC's Executive Director at 425-450-1049 or director@eastsideheritagecenter.org.

Volunteer Corner

“The nice thing about teamwork is that you always have others on your side.” -Margaret Carty

Karen Klett
Volunteer Coordinator

visitors and helping to fulfill our commitment!

Many thanks to our great EHC Winters House team! Especially thanks to Norm & Esther Blye, Gwen Schmitz and Barbara Wade who are all retiring after many years of faithful service! We will miss them very much and greatly appreciate their dedication to the mission of EHC.

Lillian Garland and Lillian Ziegler, dedicated EHC volunteers at the McDowell House, regularly assist staff with collections management. Each Thursday morning they sort, organize and file all the vital pieces of information that have developed into our comprehensive record of Eastside history.



Above: Winters House Dining Room/Library

Thanks to all the volunteers, especially Board Trustee and Programs Committee Chair, Kim Radcliffe, who helped at the Crossroads Farmers Market and Saturdays at the Fraser Cabin all summer long.

Fortunately, we are delighted to have some outstanding new team members coming on board. Marian & Bob Boyle, Joe Chambley and Kaaren Mathiesen will be greeting

Don't we have a great team? Want to join?

Contact Karen Klett at (425) 450-1049 or karenklett@eastsideheritagecenter.org.

Eastside Heritage Center MEMBERSHIP APPLICATION

MEMBERSHIP LEVEL:

- | | | | |
|---------------------------------------|--------|--------------------------------------|-------|
| <input type="checkbox"/> Benefactor | \$1000 | <input type="checkbox"/> Contributor | \$100 |
| <input type="checkbox"/> Steward | \$500 | <input type="checkbox"/> Family | \$40 |
| <input type="checkbox"/> Supporter | \$250 | <input type="checkbox"/> Individual | \$25 |
| <input type="checkbox"/> Organization | \$100 | <input type="checkbox"/> Student | \$15 |

Enroll me as: New Member Membership Renewal Gift

MEMBER'S NAME _____

ADDRESS _____

CITY/STATE/ZIP CODE _____

PHONE _____

EMAIL _____

This membership is a gift from: _____

PAYMENT INFORMATION:

- Check (make checks payable to the Eastside Heritage Center)
 Credit Card
- Visa Master Card American Express

NAME ON CARD _____

CARD # _____

EXP. DATE _____ V-CODE (last 3 digits on back of Visa/MC)

Additional Contribution: _____ **Total Enclosed:** _____

My company will MATCH my gift

Company Name: _____

The Eastside Heritage Center is a 501 (c)(3) charitable organization.

PLEASE MAIL THIS FORM AND PAYMENT TO:

Eastside Heritage Center
 P.O. Box 40535 Phone: 425-450-1049
 Bellevue, WA 98015 Fax: 425-450-1050
www.EastsideHeritageCenter.org

All Eastside Heritage Center Members receive:

- Membership Card
- Quarterly Newsletter with historical features and program updates
- Invitations to exhibits and programs
- 10% discount on books and gift shop items

CATEGORIES:

Benefactor - \$1,000

Receives Steward Benefits, plus:
 Honored at Annual Event

Steward - \$500

Receives Supporter benefits, plus:
 Special publication
 Curator's Tour of the collection

Supporter - \$250

Receives Organization benefits, plus:
 Historic photo reproduction

Organization (schools, scout troops, etc) - \$100

Receives Contributor benefits, plus:
 Free Treasure Box rentals
 Discounts on filed trips and classroom presentations

Contributor - \$100

Additional benefits include:
 Access to Archives fee waived

Family - \$40

Individual - \$25

Student (under 18 years of age) - \$15

EASTSIDE HERITAGE CENTER CONTACT INFORMATION

Mailing Address: P.O. Box 40535, Bellevue, WA 98015
Tel: 425-450-1049
Fax: 425-450-1050
E-Mail: director@eastsideheritagecenter.org
Website: www.eastsideheritagecenter.org

McDOWELL HOUSE (EHC Administrative Offices)
Visiting Address: 11660 Main Street, Bellevue, WA 98005
Tel: 425-450-1049

WINTERS HOUSE (National Historic Site and EHC Research Services)
Visiting Address: 2102 Bellevue Way SE, Bellevue, WA 98004
Tel: 425-450-1046 (EHC Research inquiries)
425-452-2752 (City of Bellevue, Winters House)

Hours of Operation: EHC Research Office Hours
Tues., 10:00 AM - 4:00 PM

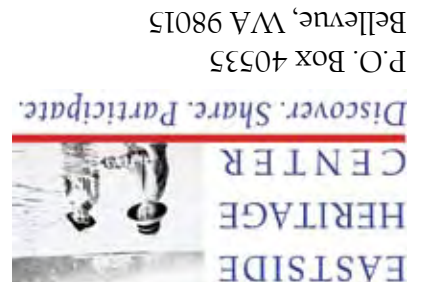
Winters House Public Visiting Hours:
Tues 10:00 AM-4:00 PM ; Thurs-Sat 10:00 AM-2:00 PM ; Closed Mon, Wed & Sun.

ACTIVITIES OF THE EASTSIDE HERITAGE CENTER ARE SUPPORTED BY



HERITAGE REFLECTOR - Editor in Chief: Lynn Sherk with Graphic Design / Layout: Heather Trescases
HERITAGE REFLECTOR © 2009 Eastside Heritage Center. All rights reserved.

NON PROFIT ORG
US POSTAGE
PAID
BELLEVUE WA 98005
PERMIT NO. 66



P.O. Box 40535
Bellevue, WA 98015