

EASTSIDE HERITAGE CENTER



Connections for yesterday, today, and tomorrow.

HERITAGE REFLECTOR

Spring 2014

Volume XIV

Issue I

Vision

To be a destination heritage museum and research facility that enhances community identity through the preservation and stewardship of the Eastside's history.

Mission

To steward Eastside history by actively collecting, preserving, and interpreting documents and artifacts, and by promoting public involvement in and appreciation of this heritage through educational programming and community outreach.

In this Issue

Recent Accessions.....	2
Wish List.....	2
Collections Corner	3
Welcome.....	4
In Memoriam	4
Programs.....	5
Thank You.....	6
Volunteer Corner.....	7
EHC Membership	7

Buried Treasure...

The Story of Eastside Coal Mining

Steve Williams
Volunteer

Bellevue's Coal Creek Park borders the Cougar Mountain Wildlife Park in King County. Coal Creek is the City of Bellevue's largest Natural Resource Park and was once the site of a thriving mining town.

There are still mine shafts, exposed coal streams and mining equipment visible in the park as well as building remnants from different structures and mine operations that were in the town – the hotel, a coal bunker, the wood flume which directed Coal Creek, and a railroad turntable foundation.

The first settlement, Old Newcastle, was located near today's 136th Ave SE, just west of the golf course. By 1890 there were approximately 500 residents. By 1920, population was close to 1,000.

In 1863, a survey party led by Edwin Richardson discovered

eight bands of 'stone cole' while working up a stream from Lake Washington. Hundreds of people soon flocked to the region intent on earning a living as coal miners.

For many years the cost of getting coal to market was the biggest problem for Eastside mines. First, it was taken in sacks by wagon and canoe across the lake to Leschi, and then by wagon again up and over the hill to the Seattle docks. Then for four years, the coal was taken out the south end of Lake Washington by a variety of watercraft along the Duwamish River. This was a long, slow journey complicated by fallen trees, shifting sandbars and shallow water – a round trip might take two weeks or more.

Then for eight years, the tramway allowed coal cars to be loaded directly onto a barge which was taken north to Montlake where the cars

had to be taken on land to Portage Bay; and then again barged to Lake Union, and then again by rail to the Seattle docks. By the time the coal was loaded onto ships for its final voyage, it had been transferred eleven different times which added greatly to its cost of production.



Above: Pacific Coast Coal Bulletin, July 27, 1927. EHC Archive Collection, #2005.019.004

Continued on page 2...

...Coal Mining, cont. from pg. 1

When the last mines closed in 1963, over 11 million tons of coal had been extracted. Coal was King County's first large industry, helping Seattle become a major port city, as it shipped coal to San Francisco from 1870 to 1930.

Today the park offers lots of great hiking trails, easy access to Cougar Mountain and soon, seven new interpretive signs, thanks to funding from 4Culture and a partnership between Eastside Heritage Center and Bellevue Parks & Community Services.

Tribute

MILT SWANSON
(1918 - 2014)



Photo courtesy Bob Cerelli.

Ernest "Milt" Swanson, our local 'living history treasure' recently passed away at the age of 95. His house, at one time part of the Newcastle mining operation, sits across from Cougar Mountain's Red Town Trailhead, and Milt had a key role in creating that park.

He was born in 1918 during the flourishing years of the huge coal-mining operation centered there on Coal Creek. Milt worked as a mechanic and truck driver for the B & R Coal Company during the last 17 years of Newcastle operations, right up until 1963. Swanson lived in Company house #180 next to Lakemont Boulevard his entire life.



Above: Bellevue High School girls bowling club, 1954. Photo donated by Don Ulrich, 2013.055.004.

Recent Acquisitions

You may notice a lot of donations in the following list that do not seem particularly "old". Artifacts and archive materials from the 1970's, 80's, 90's and into the 2000's are valuable additions to EHC's collection. They help us tell the story of the Eastside by providing a more contemporary view on everyday life and help us maintain an up-to-date record on changes and development within our community. Remember, history is happening every day!

Thank you for your donations to the collection:

Don Ulrich

- Photos and negatives from Bellevue High School in the 1950's

Sam Kyle

- Section of wall, with vendor labels, from the Bellevue Growers Association building and photos from the building site

Ross McIvor

- Sammamish High School advertisement

Joanne Matsumura

- Bellevue area graduation announcements, 1980-2000's

Leslee Stull Dasher

- Bellevue Dry Goods interior photo

Trisha Nerney

- Village Inn plate and lingerie box from The Pink Garter

Stu Vander Hoek

- King County Library card, BDA materials

Margot Blacker

- Photos of downtown Bellevue development, 1990-2000's

Joseph Saxon

- Bellevue Soroptimist Club banner, 1978

Karen Klett

- Board games, used by Eastside families, 1970-1980's

Jim Ladd

- Bellevue Police Department materials

Barrier Motors

- Eastside Rentals sign

Pat Roome

- Bellevue Botanical Gardens photos

Anna Littlewood

- Bellevue Botanical Gardens ephemera

Kathleen McDonald

- McDonald family materials, including Lucille McDonald's rocking chair and other personal items

Norris Bevan

- Personal memoir materials

Wish List

EHC is seeking the following donations:

FOR THE OFFICE:

- Label Maker
- Self-healing cutting mat
- Color printer & scanner for Winters House archives office.

FOR THE COLLECTION:

Information on the following topics:

- Parks
- Neighborhoods – e.g. Surrey Downs and Sherwood Forest
- Entertainment/Activities (theaters, movie complexes, ice rinks, bowling alleys, etc.)
- Shopping Centers, e.g. Lake Hills, Eastgate, Kelsey Creek
- Churches
- Businesses

To Donate Items:

call 425-450-1049 or email collections@eastsideheritagecenter.org

Collections Corner

Sarah Frederick
Collections Manager

EXHIBITS

Stop by the Winters House to check out our current exhibit of vintage board games. This will be up until the end of April – don't miss it!

Also currently on exhibit is *A Night at the Theater* inside the lobby of the Bellevue Theatre at Meydenbauer Center. Keep your eyes on this location, as we plan to have several other small exhibits move through this space throughout the year.

Eastside Heritage Center is excited to be partnering with the Bellevue Collection in 2014 for a series of installations at Bellevue Square. Our first exhibit, *Living in Style*, featured a retro kitchen set-up and a 1900's bedroom set. Watch for a display of vintage spring fashions from EHC's textile collection, April 28 through May 11.

UPCOMING PROJECTS

Bellevue Botanical Gardens Oral History Project:

Interviews for this project are now under way. Information from these interviews will be used to help redesign the education and interpretation materials at the Bellevue Botanical Gardens. The oral histories will be added to EHC's oral history collection.

If you are interested in assisting us with this project by helping to conduct interviews (previous experience with interviewing

is a plus) or transcribing them, please send an email to Sarah at collections@eastsideheritagecenter.org

replacement of old shelving at the McDowell House. This section of storage houses our Native American collection. New, sturdier shelving will



Above: Living in Style exhibit at Bellevue Square, January 2014.

Journey Stories:

We are excited to welcome a new student intern to Eastside Heritage Center. Marika Levidow, a senior at the International School, has started work on a project that includes transcribing interviews collected at the 2011 and 2012 Strawberry Festivals, as part of the *Journey Stories* oral history project. Marika will be using the content of these interviews, as well as other historical sources, to develop an exhibit on diversity in Bellevue. Watch for the exhibit to be on display later this year at the Winters House (opening May 1st) and at the Strawberry Festival.

Grants:

Thanks to generous funding from 4Culture, Eastside Heritage Center was able to purchase over \$900 worth of archival supplies already this year. Our next collections project will include the

prolong the life of these artifacts and will improve access to the collection. Funds for this project were awarded to EHC by the Bellevue Rotary.

The Kane's Motel

The Kane's Motel was located along Highway 10 (now I-90) in Eastgate, just west of 148th Avenue SE. Kane's Motel was an active rest stop up until the early 2000's and was just one of many motels and motor lodges along Highway 10 that sprung up in the 1950's and 60's.

Even though the building was converted into smaller offices

in the 2000s, the large candy cane sign remained, due to a grandfather clause in Bellevue's current sign ordinance. Because it is a tall, free standing sign, it would not be allowed to be built today.

The Kane's Motel building is slated for destruction so that a new car dealership can be built on the property. The sign was originally painted red with white stripes on the cane, but several years ago it was repainted green with white stripes. The name on the sign reflects the last business to occupy that site, a law agency.

Eastside Heritage Center has the opportunity to add this iconic sign to our permanent collection, but due to the physical limitations of our facilities and the ongoing costs that storing an artifact of this size would incur, we cannot responsibly do so without support from the community.

If you are interested in helping or learning more about what it would take to preserve this sign please email EHC's collections manager at Collections@EastsideHeritageCenter.org.



Eastside Heritage Center

Board of Trustees

Kim Radcliffe <i>President</i>	Trisha Nerney <i>Secretary</i>	Rona Ji Kathleen McDonald
Karen Klett <i>1st Vice President</i>	Rick Carlson Reagan Dunn	Ross McIvor Justin Merriman
Betina Finley <i>2nd Vice President</i>	Sherry Grindeland Ray Higgins	Jan Van Blaricom Stu Vander Hoek
Michael Luis <i>Treasurer</i>	Tim Johnson	

Staff

Heather Trescases <i>Executive Director</i>	Sarah Frederick <i>Collections Manager</i>
Jane Morton <i>Education Coordinator</i>	Anna Flora <i>Strawberry Festival Coordinator</i>

Endorsers

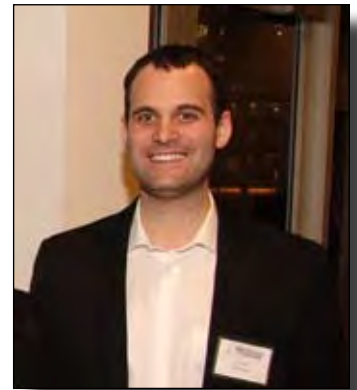
Bob & Clodagh Ash	Sarah Langton	Daphne Schneider
Margot Blacker	Pamela Lee	David Schooler
George Brace	Ken Johnson	Karl Thunemann
Dick Chapin	Leslie Lloyd	John Valaas
Mike Creighton	Doreen Marchione	Janice & DP Van Blaricom
Jean Floten	Dan McDonald	Bob Wallace
Kemper Freeman, Jr.	Louise Miller	Scott Wallace
Stacey Graven	Rose Nohara	Rosalie Whyel
Jerry Henry	Bob Nuber	
Ross Hunter	Ron Sher	
Tom Ikeda	Lee Springgate	
Carol James	Bill Ptacek	
Fred Jarrett	Colin Radford	

Charter/Founding Members

Brad Best	Louise Miller
John Betrozoff	Alex Modelski
C.Keith Birkenfeld	Charles Morgan
Richard & Margot Blacker	Bob Neir
Charles Bovee	Phil & Shelley Noble
Dianna Broadie	C. & W. O' Donell
John Cannon	Arnold Olson
Karyl Dean	Sally Polk
Steve & Kathy Dennis	Connie Reed
Phyllis Fenwick	Betty Ann Rizk
Diana Ford	Bob & Pat Sandbo
Peter Gulick	Victor Scheffer
Birgit Hansen	Daphne Schneider
Peggy Hansen	Dick & Susan Schwasnick
Bob Hennig	Barbara Sharpe
Thomas K. Hitzroth	W. & V. Thompson
Bill Lagen	Karl Thunemann
Charles Le Warne	Iris Tocher
Anne Long	D.P. & J. Van Blaricom
Jim & Pat Loughran	Stuart Vander Hoek
Karen & Duke Luetjen	Libby Walgamott
Louis & Patty Marsh	John Walker
Beatrice Mathewson	Doug & Patti Ward
Philip Maxeiner	James & Gwen Warren
Lee Maxwell	Robert & Barbara Welsh
John McClelland	Rosalie Whyel
Rosa McDonald	Marcy Williams

Welcome Justin Merriman

EHC's newest Board member is Justin Merriman, a Project Engineer with GLY Construction.



Justin grew up on the Eastside in Sammamish, attending Skyline High School. He graduated from Washington State University with a degree in Business and has also completed the Construction Management Certificate Program at the University of Washington.

His career so far has taken him to two different general contractors in Bellevue – Lydig Construction and GLY Construction.

Justin's passion for history stems from a mix of personal experience growing up both here and on the east coast. Growing up in Sammamish, he regularly was able to

experience many of the historical sites on the Eastside, like the coal mines on Cougar Mountain and the Iron Horse trail near North Bend. His family sold their 5th generation farmhouse in upstate New York in 1995, but Justin was able to experience multiple family gatherings there as well as in the Thousand Islands, where his family had a cabin.

Welcome, Justin!

In Memoriam

DONALD JOHNSON

Longtime Eastside Heritage Center Winters House volunteer, Don Johnson, passed away on February 2, 2014 at the age of 95. His wife, Marguerite preceded him in death in 2005. Both Don and Marguerite were third-generation Bellevue natives.



Don's grandfather, Charles H. Johnson, arrived in Bellevue in 1892, and his mother's father, Patrick McGauvran, arrived in 1908 and owned the first store on Main Street - the Bellevue Mercantile Company.

A World War II Vet, Don was a buyer for Sears & Roebuck, retiring in 1982. In his retirement, Don was very active with the Bellevue/Redmond VFW, in addition to his monthly role as a Winters House host.

Don will be missed!

Upcoming Programs

FRASER CABIN HERITAGE PROGRAMS

Dates & Times: Saturdays, May 17 & June 21
11:00 AM - 3:00 PM

Location: Kelsey Creek Farm Park

Visitors are invited to participate in hands-on activities that relate to early Eastside settler life at the historic 1888 Fraser Cabin. Eastside Heritage Center staff and volunteers present the activities and interpret the log cabin that was built and occupied by the Fraser family over 100 years ago!

Presented in partnership with Bellevue Parks & Community Services.

EARLY BELLEVUE WALKING TOUR

Date & Time: Sunday, May 4, 2014
2:00 PM - 4:00 PM

Location: Bellevue Downtown Park, Main Entrance & Fountain on NE 4th Street

Registration: 425-450-1049 or email
info@eastsideheritagecenter.org
Space is limited. Register by May 2.

Join us on a walking tour as we discover the hidden history throughout downtown Bellevue. The tour will follow Eastside Heritage Center's recently published Walking Tour Guide.

Before glass towers defined the skyline and shoppers bustled across busy pavement, Bellevue was a quiet town of dirt roads and scattered homes. The first settlers from Seattle began to drift across Lake Washington in the 1860s.

Presented in partnership with Feet First as part of Jane's Walk.

COAL CREEK HISTORY HIKE

Date & Time: Sunday, June 1, 2014
2:00 PM - 4:00 PM

Location: Redtown Trail Head
(7336 Lakemont Boulevard S.E., Bellevue)

Join us to discover the rich coalmining and natural history of this special area on an easy walk along the beautiful, narrow and wooded trails of Coal Creek Park.

Presented in partnership with Bellevue Parks & Community Services and the Issaquah Alps Trail Club.

HISTORY OF THE MERCER SLOUGH TALK & WALK

Date & Time: Sunday, May 18, 2014
2:00 PM - 4:00 PM

Location: Mercer Slough Environmental Ed. Center
(1625 118th Ave SE, Bellevue)

Did you know that the Mercer Slough was a staging ground for the 1856 "Battle of Seattle" between the Native Americans and the European-American settlers? Using photos and historic documents from the Eastside Heritage Center's collections, you will discover the history of the Mercer Slough and its influence on Bellevue. Come and hear about ferries, logging, farming, office parks, and nature preserves.

On the experiential walk following the talk, learn about some of the plants in the Slough and how you could survive using the plant technologies developed by local Native Americans.

Presented in partnership with Bellevue Parks & Community Services.

NEW BELLEVUE HISTORY BOOK LAUNCH & EHC ANNUAL MEETING

Date & Time: Wednesday, June 11, 2014
7:00 PM - 9:00 PM

Location: Winters House (2102 Bellevue Way SE)

Join us for EHC's Annual Meeting and the release of our newest Bellevue history book from Arcadia Publishing - *Bellevue: Post World War II Years*. Within the pages of this book are photographs and documents from Eastside Heritage Center's extensive collection, illustrating Bellevue's mid-century history as an all-American suburb.

EHC Trustee and Book Editor, Michael Luis, will present a visually compelling program telling the post-War Bellevue story, featuring images from the book.

In just a few generations, Bellevue has grown from a small farming town into an important urban center and economic hub, with the foundations for this success being laid in the two decades following World War II. Bellevue became the primary commercial center for the vibrant new communities of the 1950s-60s. Families flocked to the shiny subdivisions, with new schools, shopping centers, churches and parks springing up right behind. But it was strong political, business and civic leadership that kept Bellevue from being just another sprawling suburb. As business began to push outward from Seattle, Bellevue was able to grow gracefully and preserve its sense of place.

During the evening's program Eastside Heritage Center will also say THANK YOU to our tremendous volunteers and recognize our Volunteer of the Year.

Thank You

2014 HERITAGE BENEFIT DINNER SPONSORS

A warm thank you to all those who supported the 7th Annual Heritage Benefit Dinner on February 27, 2014 at the Meydenbauer Center. Your generosity raised over \$65,000 towards the stewardship of Eastside history.

Heritage Stewards



Homesteaders

THE BELLEVUE CLUB
FAMILY OF LUCILLE McDONALD
SU DEVELOPMENT
TIM & EDIE JOHNSON
KC COUNCILMEMBER JANE HAGUE, DISTRICT 6

Pioneers

Baylis Architects
Bill & Nancy Way
D.P. & Janice Van Blaricom
The Fortin Group

Peterson, Russell, Kelly PLLC
Radcliffe Family
Wallace Properties
Wright Runstad & Co.

SPECIAL THANKS

520 Bar & Grill
Bis on Main
Margot Blacker
Geoff Bradley
David Browne
John Cannon
Cantinetta
Rick Carlson
Chateau Ste. Michelle Winery
Andrew Dana
Eastside Dream Elite
Meredith Everist
Betina Finley
Anna Flora
Flywheel Sports
Diana Schafer Ford
Freeman Family
Gilbert's on Main
Sherry Grindeland
Glenn & Roberta Greer
Paul Hahn
Heavy Restaurant Grp.
Hedge & Vine
Ray Higgins
Hotel Bellevue
Howard/Mandville Gallery
Karen Klett
Warren Koons
Steve Lawson
Le Grand Bistro
Lil Jon Restaurant

Sharon Linton
Michael Luis
Ross McIvor
Justin Merriman
Meydenbauer Center
Monsoon East
Music Works NW
Trisha Nerney
Bruce & Bernice Nurse
Cindy Pigott
Pondera Winery
Kim Radcliffe
Seafair
Roxanne Shepherd
Lynn Sherk
The Spot off Main
Team Photogenic
Iris Tocher
Nick & Heather Trescases
Bryan Vander Hoek
Carl Vander Hoek
Stu & Karen Vander Hoek
Ted Vander Hoek
Vavako, Inc.
Steve & Barb Williams
T.J. Woosley



Volunteer Corner

*Volunteers are not paid - not because they are worthless,
but because they are PRICELESS.*

Karen Klett
Volunteer Coordinator

Yes, spring is here, and that means our Summer-Volunteer-Intensive season is coming!!

This is our time to SHINE in the community, as we present numerous programs from April through October. Here are some opportunities for you to participate in:

Saturdays at Fraser Cabin begin with Sheep Shearing on April 26th and continue on the third Saturday of the month until Farm Fair in October. You can help any of these days from 11:00am – 3:00pm, interpreting the log cabin and providing hands-on history activities for families.

Crossroads Farmers Market starts in May and is a wonderful opportunity to meet people and share the Eastside Heritage Center

story. EHC is a partner of the Market and has a presence there at least once a month.

Strawberry Festival at Crossroads Park is June 28 & 29 this year. Talk about FUN – this is it! Lots and lots of opportunities for adults and kids! It will be better than ever!

So bring your PRICELESS talents and love of Eastside history to any of these, and help us SHINE this Spring and Summer.



Above: EHC Board member, Rick Carlson, assists with butter churning at the Fraser Cabin during the spring Sheep Shearing event.

Contact EHC and get involved today.

Karen Klett
Volunteer Coordinator
425-450-1049

karenklett@eastsideheritagecenter.org

All Eastside Heritage Center Members receive:

- Membership Card
- Quarterly Newsletter with historical features and program updates
- Invitations to exhibits and programs
- 10% discount on books and gift shop items

CATEGORIES:

Benefactor - \$1,000

Receives Steward Benefits, plus:
Honored at Annual Event

Steward - \$500

Receives Supporter benefits, plus:
Special publication
Curator's Tour of the collection

Eastside Heritage Center MEMBERSHIP APPLICATION

MEMBERSHIP LEVEL:

- | | | | |
|---------------------------------------|--------|--------------------------------------|-------|
| <input type="checkbox"/> Benefactor | \$1000 | <input type="checkbox"/> Contributor | \$100 |
| <input type="checkbox"/> Steward | \$500 | <input type="checkbox"/> Family | \$40 |
| <input type="checkbox"/> Supporter | \$250 | <input type="checkbox"/> Individual | \$25 |
| <input type="checkbox"/> Organization | \$100 | <input type="checkbox"/> Student | \$15 |

Enroll me as: New Member Membership Renewal Gift

MEMBER'S NAME _____

ADDRESS _____

CITY/STATE/ZIP CODE _____

PHONE _____

EMAIL _____

This membership is a gift from: _____

PAYMENT INFORMATION:

- Check (make checks payable to the Eastside Heritage Center)
 Credit Card
 Visa Master Card American Express

NAME ON CARD _____

CARD # _____

EXP. DATE _____ V-CODE (last 3 digits on back of Visa/MC) _____

Additional Contribution: _____ **Total Enclosed:** _____

My company will MATCH my gift

Company Name: _____

The Eastside Heritage Center is a 501 (c)(3) charitable organization.

PLEASE MAIL THIS FORM AND PAYMENT TO:

Eastside Heritage Center
P.O. Box 40535 Phone: 425-450-1049
Bellevue, WA 98015 Fax: 425-450-1050

www.EastsideHeritageCenter.org

Supporter - \$250

Receives Organization benefits, plus:
Historic photo reproduction

Organization (schools, scout troops, etc) - \$100

Receives Contributor benefits, plus:
Free Treasure Box rentals
Discounts on field trips and classroom presentations

Contributor - \$100

Additional benefits include:
Access to Archives fee waived

Family - \$40

Individual - \$25

Student (under 18 years of age) - \$15

EASTSIDE HERITAGE CENTER CONTACT INFORMATION

Mailing Address: P.O. Box 40535, Bellevue, WA 98015
Tel: 425-450-1049
Fax: 425-450-1050
E-Mail: director@eastsideheritagecenter.org
Website: www.eastsideheritagecenter.org

McDOWELL HOUSE (EHC Administrative Offices)
Visiting Address: 11660 Main Street, Bellevue, WA 98005
Tel: 425-450-1049

WINTERS HOUSE (National Historic Site and EHC Research Services)
Visiting Address: 2102 Bellevue Way SE, Bellevue, WA 98004
Tel: 425-452-2752

Hours of Operation: EHC Research Office Hours
Tues., 10:00 AM - 4:00 PM

Winters House Public Visiting Hours:
Tues 10:00 AM-4:00 PM ; Thurs-Sat 10:00 AM-2:00 PM ; Closed Mon, Wed & Sun.

ACTIVITIES OF THE EASTSIDE HERITAGE CENTER ARE SUPPORTED BY



HERITAGE REFLECTOR - Editor in Chief and Design/Layout: Heather Trescases
HERITAGE REFLECTOR © 2014 Eastside Heritage Center. All rights reserved.

First Class
U.S. Postage Paid
Permit #66
Bellevue, WA

EASTSIDE
HERITAGE
CENTER
Discover. Share. Participate.
P.O. Box 40535
Bellevue, WA 98015